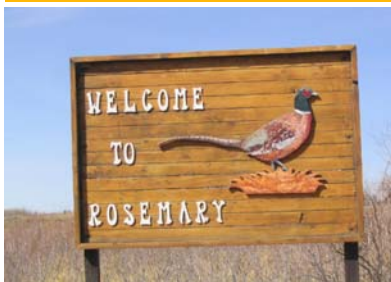


Volume 7, Issue 1

March 2009



OLDMAN RIVER REGION URBAN GIS PROJECT

# Regional GIS Update

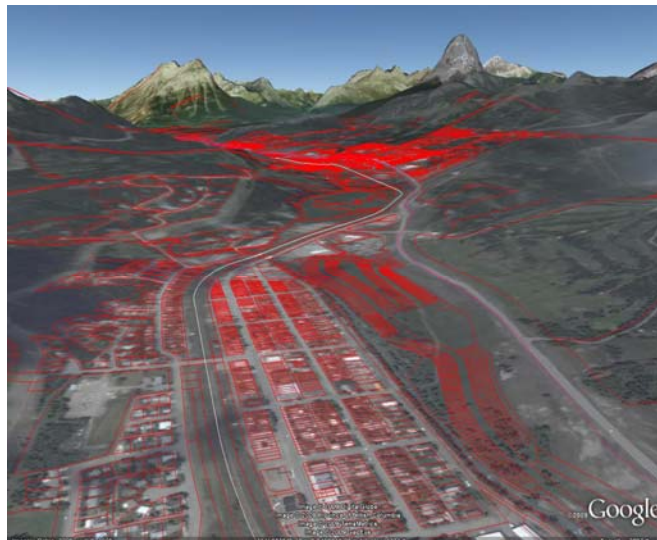
With the beginning of a new year, the Oldman River Region Urban GIS Project would like to welcome the Village of Rosemary to the project. With the addition of Rosemary, current membership now sits at 32 municipalities. In the coming weeks, ORRSC staff will travel to Rosemary to provide municipal staff with the necessary skill set to operate the GIS. As a reminder, this service is available to every municipality as ORRSC staff wants to ensure that every prospective user is comfortable with the GIS.

The 2009 Oldman River Region Orthophotography Project contract has been awarded to Land Data Technologies Inc. (LDT) of Edmonton. LDT will subcontract the firm of Stewart Weir and Company to conduct the ground surveys, and Foto Flight Survey to carry out the aerial operations. The quotation that LDT provided was very close to our initial estimates and we anticipate that the project will commence on schedule and will fall within the available budget.

A reminder to those municipalities who plan to, or have recently

completed a n Infrastructure Master Plan (IMP), that the information provided can be viewed in the GIS. ORRSC staff have been successful in linking some of the costing information to relevant infrastructure features and in turn generating reports outlining the same.

As you may know, ORRSC staff carry out on-the-fly parcel mapping with information coming in the form of registered plans, and bi-weekly title updates using the information supplied by each municipality's land title access. When in fact new parcels are created via subdivisions, consolidations, or separations, it is required that the municipal office supply new roll numbers and civic addresses. Initially, the parcels will show up green only until we receive new roll numbers. Additionally, ORRSC staff needs to be made aware of any mailing address errors within the GIS. In some instances a title document will show a civic address instead of the actual mailing address.



## Spring 2009 Update

### Partnering Municipalities

Village of Arrowwood  
Village of Barnwell  
Village of Barons  
Village of Carmangay  
Village of Champion  
Village of Coutts  
Village of Cowley  
Village of Hill Spring  
Village of Lomond  
Village of Milo  
Village of Nobleford  
Village of Rosemary  
Village of Stirling  
Village of Warner

Town of Cardston  
Town of Claresholm  
Town of Coaldale  
Town of Coalhurst  
Town of Fort Macleod  
Town of Granum  
Town of High River  
Town of Magrath  
Town of Milk River  
Town of Nanton  
Town of Picture Butte  
Town of Pincher Creek  
Town of Raymond  
Town of Stavely  
Town of Taber  
Town of Vauxhall  
Town of Vulcan  
Municipality of Crowsnest

### Did You Know?

- ORRSC staff have the ability to take control of your computer using a software package called GoToMeeting. With this an ORRSC staff member can actually see you working on your own computer, or vice-versa.
- Parkland Community Planning Services (PCPS) are seeking the aid of ORRSC GIS staff members for the possibility of creating their own regional GIS for the Red Deer region similar to what we have here in southern Alberta.

### GIS TIPS

- For your computer to remember your GIS password, do the following:  
Tools-Internet Options-Content-AutoComplete Settings-Check Prompt Me To Save Passwords.

(Left) ORRSC title mapping overlay for Crowsnest Pass as viewed in Google Earth.

Check out some more interesting GIS sites:

Microsoft Virtual Earth  
[www.mywonderfulworld.com](http://www.mywonderfulworld.com)  
[www.gisday.com](http://www.gisday.com)