

MUNICIPAL DISTRICT OF WILLOW CREEK NO. 26

NOTICE OF CHINOOK INTERMUNICIPAL SUBDIVISION AND DEVELOPMENT APPEAL BOARD HEARING

Development Permit 144-24

THIS IS TO NOTIFY YOU THAT IN ACCORDANCE WITH SECTION 686 OF THE MUNICIPAL GOVERNMENT ACT, REVISED STATUTES OF ALBERTA, 2000, CHAPTER M-26, AS AMENDED, A PANEL OF THE CHINOOK INTERMUNICIPAL SUBDIVISION AND DEVELOPMENT APPEAL BOARD WILL HEAR AN APPEAL OF A DEVELOPMENT PERMIT ISSUED BY THE:

Development Authority of the Municipal District of Willow Creek No. 26 with respect to Development Permit No. 144-24

APPELLANT: Foothills County

APPLICANT: Miles Laybourne

LEGAL DESCRIPTION: NE 31-16-28-W4

PROPOSAL: Recreational Vehicle Storage consisting of recreational vehicles, boats, farming and industrial equipment. Installation of on-site signage.

DECISION: APPROVED WITH CONDITIONS

PLACE OF HEARING: **Municipal District of Willow Creek No. 26 – Municipal Administration Building**
#273129 Secondary Highway 520 West
(Claresholm Industrial Airport)

DATE OF HEARING: **February 4, 2025**

TIME OF HEARING: **1:30 p.m.**

PROCEDURES PRIOR TO THE HEARING FOR DP 144-24:

1. **Provide Written Submissions** - The Appeal Board is encouraging all hearing participants to submit presentations, letters, and comments to the Board prior to the hearing. It is preferred that written material is emailed to the Board Clerk, ideally in a PDF format. Please contact the Clerk with your written submissions, which will be accepted until **12:00 p.m. January 31, 2025.**

EMAIL: kattieschlamp@orrsc.com

MAIL: **Kattie Schlamp, Board Clerk**
Oldman River Regional Services Commission
3105 – 16th Avenue N., Lethbridge, Alberta T1H 5E8

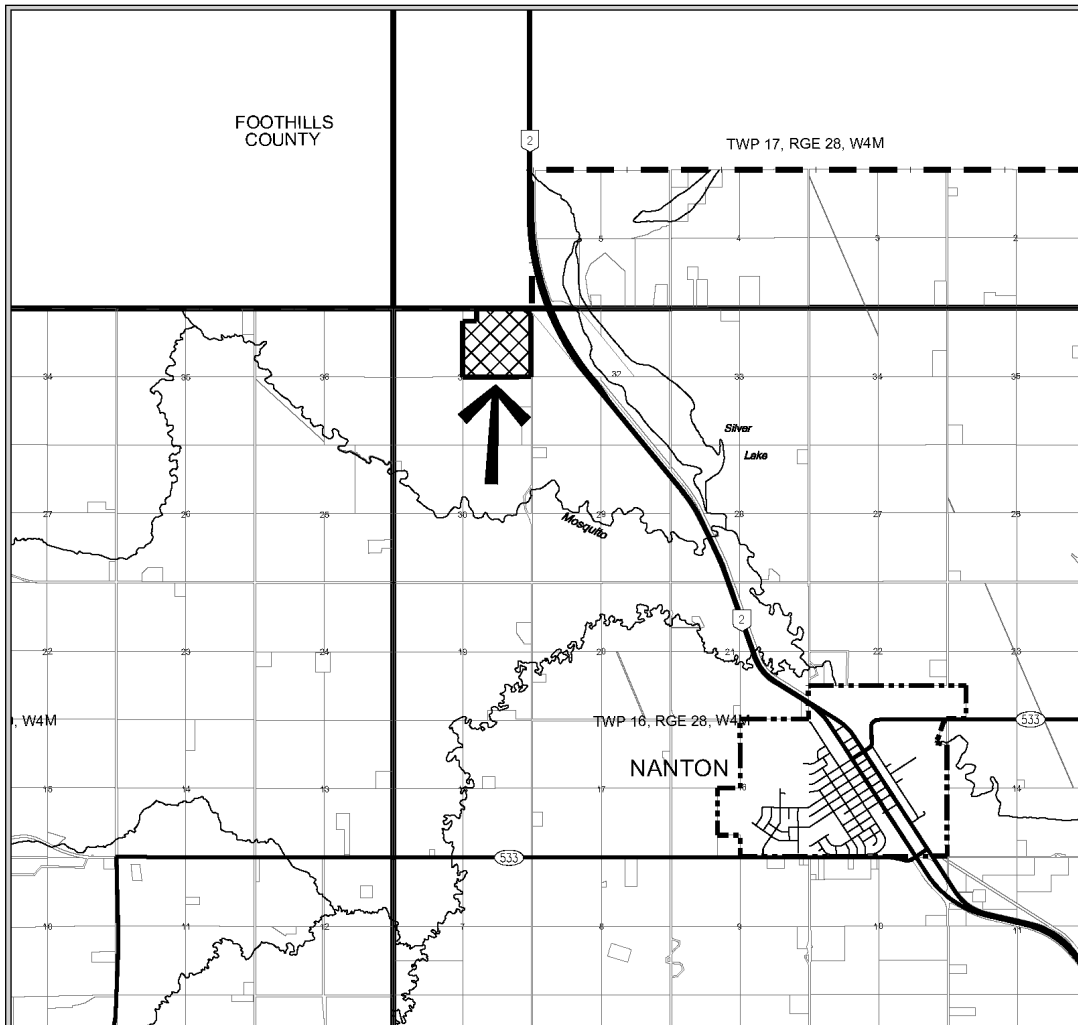
If you are bringing information to the hearing for submission, you are required to supply 12 copies.

2. **Exhibit Viewing** - The initial appeal exhibit package will be posted on the ORRSC website at **www.orrsc.com**. Any additional submissions submitted up to noon on January 31, 2025, will be posted to the website prior to the hearing.

MUNICIPAL DISTRICT OF WILLOW CREEK NO. 26

CHINOOK INTERMUNICIPAL SUBDIVISION AND DEVELOPMENT APPEAL BOARD

Land Subject of Appeal Hearing DP 144-24
NE 31-16-28-W4



LOCATION SKETCH
NE 1/4 SEC 31, TWP 16, RGE 28, W 4 M
MUNICIPALITY: MUNICIPAL DISTRICT OF WILLOW CREEK NO. 26
DATE: JANUARY 20, 2025

MAP PREPARED BY:
OLDMAN RIVER REGIONAL SERVICES COMMISSION
FOR THE APPEAL HEARING. ACCURACY OF THIS MAP IS NOT GUARANTEED BY THE COMMISSION.
NOT RESPONSIBLE FOR ERRORS OR OMISSIONS.



OLDMAN RIVER REGIONAL SERVICES COMMISSION
January 20, 2025 N:\Willow-Creek-MD\Willow-Creek-MD-Projects\Willow-Creek-Location - NE31-16-28W4M.dwg

DATE: January 20, 2025



Kattie Schlamp, Clerk
Subdivision & Development Appeal Board